



Satisfy Your Needs for
Car Repair

Spray Gun Cleaner



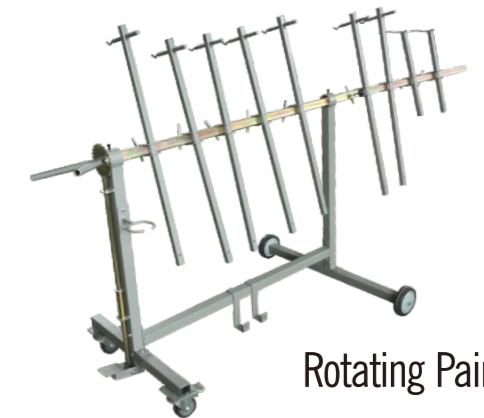
is the subsidiary of
WOKI STAR

GUANGZHOU ANONA CO., LTD
ANONA ELECTROMECHANICAL CO., LIMITED

Phone 0086-20-87460378
Cell 0086-13922179158
E-mail anona@anonaauto.com
Whatsapp 0086-13922179158



Dustless Sander Vacuum Trolley



Rotating Paint Stand

Dustless Sander Vacuum Trolley



Model: **AN-LY1**

- Unique **Connection Design** of Assembly Hose and Sander, ensuring quicker sander change.
- **Professional Industrial Integrated Sanding Vacuum Machine**, distinct from regular refitted vacuum cleaner.
- **45L Dust Holding Capacity**, extending cleaning cycle and reduce worker's workload.
- **Zipper-Design on dust bag & Buckle-Door Design** make dust cleaning easier.
- **NORTON Sander (181 holes)** is optional. Dust absorption is much stronger.

Technical Data

Power	1200 W
Wire Length	8 M
Air Capacity	3900 L/min
Max. Vacuum	2400Pa
Dust Holding Capacity	45 L
Filtering Area	6236 cm ²
Voltage	220-240V , 50/60Hz
Machine Size	50x50x134 cm
Weight	40 kg



Packing List for Model AN-LY1

6" Air Sander Orbit 3mm	6" Air Sander Orbit 5mm	Hand Sanding Block	Dust Hose	Dust Hose for Hand Sanding Block	Y-Joint Hose Connection	Oil-Water Separator
1 pc	1 pc	1 pc	1 pc	1 pc	1 pc	1 pc



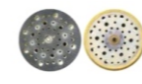
Product Name	Model No.
3" Pneumatic Polisher	8010



Vacuum Hose Assembly-red	8011
--------------------------	------



6" 17 holes Backing Pad	8012
-------------------------	------



6" multi holes Backing Pad	8013
----------------------------	------



5" PU Hand Sanding Block	8014
--------------------------	------



6" PU Hand Sanding Block	8015
--------------------------	------



70x125 PU Hand Sanding Block	8016
------------------------------	------



70x198 PU Hand Sanding Block	8017
------------------------------	------



Dust Collection Bag	8018
---------------------	------



Polyester Film Sanding Disc	8019
-----------------------------	------



Paper Sanding Disc	8020
--------------------	------



Square Sanding Disc	8021
---------------------	------



70x198 Hand Sanding Block	8022
---------------------------	------

Technical Data

Working Air Pressure	6.1 kg/cm ² (86.75PSI/5.982 bar)
Power	1.2 kw 10%
Negative Pressure	2.100mm/H2
Dust Holding Capacity	36 L
Air Capacity	2.5 m ³ /min
Voltage	220-240 V, 50/60 Hz
Package Size	680 x580 x820 mm
Weight	35 kg



Product Name	Model No.
70x125 Hand Sanding Block + Hose	8004



6" Soft Interface Pad	8005
-----------------------	------



6" Protective Pad	8006
-------------------	------



5"Self-GeneratedSander + Bag	8007
------------------------------	------



Self-GeneratedSander + Bag	8008
----------------------------	------



Mini Pneumatic Sander	8009
-----------------------	------

Model: **AN-DS1**



Product Name	Model No.
Vacuum Hose Assembly-black	8000



6" Round Sander	8001
-----------------	------



90x180mm Square Sander	8002
------------------------	------



70x198 Hand Sanding Block + Hose	8003
----------------------------------	------



Shortwave Infrared Paint Curing Lamp



Model:
PL-3TD

- CE Approved
- Nine models are optional for baking area application from 650x500mm to 2000x1000mm.
- PL-3TD is with "Temperature Measurement" and "Distance Measurement" functions.
- HL-1 is a handheld model for special application.
- High heat reflecting rate guarantee excellent heating performance; superior heat dissipation itself ensures longer service life.



Model:
PL-2E



Model:
PL-6E



Model:
PL-HL1

Shortwave Infrared Paint Curing Lamp



Model:
PL-1



Model:
PL-2B



Model:
PL-3E



Model:
PL-3B



Model:
PL-6B

Spray Gun Cleaner



Model:
SGC-A

Foot Pedal and Pedestal

- Cleaning free from disassembly is realized by our Spray Gun Cleaner.
- It cleans spray gun through separating compressed air and solvent under high negative pressure.
- NO PUMP cleaning ensures quick and optimum cleaning finished **within 30 seconds**.
- It can efficiently use for water-based solvent or oil-based solvent.
- Two containers are equipped to hold clean solvent and recycled solvent separately, **saving more solvent**.

Technical Data

Air Consumption in Max. Pressure	90 L/min
Air Consumption under Constant Solvent	70 L/min
Max. Pressure	8 bar
Solvent Pipe Inner Dia.	8 mm
Compressed Air Pipe Inner Dia.	5 mm
Exhaust Line Dia.	100 mm
Noise	<80dB
Dimension(LxWxH)	500 x 330 x 1402 mm
Net Weight	30 KG



Model:
SGC-B

Wall Mounted

Technical Data

Air Consumption in Max. Pressure	90 L/min
Air Consumption under Constant Solvent	70 L/min
Max. Pressure	8 bar
Solvent Pipe Inner Dia.	8 mm
Compressed Air Pipe Inner Dia.	5 mm
Exhaust Line Dia.	100 mm
Noise	<80dB
Dimension(LxWxH)	350 x 330 x 1000mm
Net Weight	30 KG

Promise No Any Shaking

during operation



Rotating

Model:
RPS-1

Paint Stands



- **ELECTROPLATING** beam & spring pole longer service life

- **DEEPER GROOVER** rotating plate locking much firmly

- Additional **LOCATING RODS** at two ends high stability after locked



Model:
PS-A



Model:
PS-B



Model:
PS-C



Model:
PS-D

Paint Mixing Machine



Safe Control Box
15 minutes mixing time setting.



Model:
PMM



Removable Platform
for 0.5 / 1 L cans positioning
in large-can shelf



Extended space
is at back of shelf for storage.



Extended plate
is at front of shelf for
more operation space



MODEL NO.	PMM-S	PMM-L
Paint Can Size	Mixing Heads Per Shelf	
0.5/1 L	12 pcs	18 pcs
2.5/4 L	8 pcs	12 pcs
5 L	7 pcs	11 pcs
Width	1620 mm	2320 mm
Height	1880-2230 mm	2030-2230 mm
Depth	530 mm	530 mm



Paint Mixing Table



Model:
PMT-A

Material: 1.2mm thick Stainless Steel;
with drawers and sliding door;
It is designed for paints storing and mixing;
Dimension is 1100 x 500 x 800mm (L x W xH)

Material: 1.2mm thick Stainless Steel;
Lighting is equipped for better paint mixing environment;
with drawer and doors;
It is designed for paints storing and mixing;
Dimension is 1520 x 660 x 1350mm (L x W xH).
Exhaust fan is optional.



Model:
PMT-B



Model:
PMT-C

made of 304# stainless steel;
with low-noise axial fan and air duct for exhausting;
Bench Standard size is 2400x800x970mm;
Size can be customized design according to actual
application requirements.

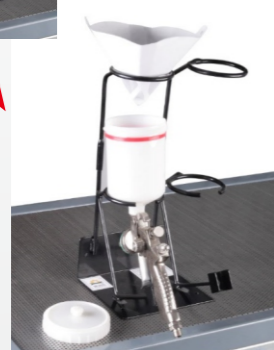
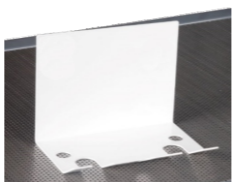
Pump Solvent Spray Bottle



- Material: HDPE
- Capacity: 1L
- Brass nozzle
- Color: white
- Viton "O" ring
- Suitable for acid-base solution

Spray Gun Holder

- It is an ideal tool to place spray guns, which creates clear working environment.
- The holder is movable so that you can locate it on your mixing table or on your mixing room wall.



Part Code: GH-A

Part Code: GH-B

Part Code: GH-C

Part Code: GH-D

Spray Gun Oil And Water Separator



Model:
OWS-A
Two-Stage Fine Fitter

Parameters

The Air Flow:	2800 l/min(98.6cfm)
Air inlet:	1/2 inch
Two outlet values:	1/4 inch
Max working pressure:	14 bar (210psi)
Max working temperature:	120°C (67°F)

Filter Details

- One stage is for separating out water and solid particles up to 40 μ m;
- The other filter cartridge in micro is for removing impurities such as water, residual oil concentration below 0.1 mg/m³ and solid particles up to 0.01 μ m;
- The third stage fine filter is with one active charcoal filter, allowing an excellent supply of compressed air which contains particles below 0.05 μ m.



Model:
OWS-B
Three-Stage Fine Fitter



Masking Film&Paper and Tapes



Film Part Code	Specification	Package
CMF-55	0.55 x 25M / roll	60 rolls/carton
CMF-110	1.1 x 25M / roll	30 rolls/carton
CMF-140	1.4 x 25M / roll	30 rolls/carton
CMF-180	1.8 x 25M / roll	10 rolls/carton
CMF-380	3.8 x 100M / roll	6 rolls/carton



Paper Part Code	Specification	Package
CMP-225	225mm x 230M / roll	20 rolls/carton
CMP-300	300mm x 230M / roll	16 rolls/carton
CMP-450	450mm x 230M / roll	10 rolls/carton
CMP-600	600mm x 230M / roll	8 rolls/carton
CMP-900	900mm x 230M / roll	4 rolls/carton



Tape Part Code	Specification	Package
CMT-18	18mm x 50M / roll	48 rolls/carton
CMT-36	36mm x 50M / roll	48 rolls/carton
CMT-50	50mm x 50M / roll	48 rolls/carton

Color Matching Light Box



- F-Light --- Comparison Referential Light Source, Applicable to family/hotel
Color Temperature: 2700K; Power: 40W.
- UV --- Ultraviolet Light Source
Wave length:365nm; Power: 20W.
- D65 --- International Standard Artificial Daylight
Color Temperature: 6500K; Power: 20W.

AT-5 Light Sources	AP-6 Light Sources
F Lamp x 4pcs	F Lamp x 4pcs
UV x 1pc	UV x 1pc
D-65 x 2pcs	D-65 x 2pcs
TL84 x 2pcs	TL84 x 2pcs
CWF x 2pcs	CWF x 2pcs
	U30 x 2pcs

- TL84 --- Applicable to stores in Europe, Japan and China
Color Temperature: 4000K; Power: 18W.
- CWF (Cool White Fluorescent)
Color Temperature: 4150K; Power: 20W.
- U30 --- Warm White Fluorescent
Color Temperature: 4150K; Power: 20W.

Masking Paper Dispenser



MPD-A



MPD-B



MPD-C



MPD-D

Welding Work Bench

- Material: 5mm thick steel plate.
- Grids are design on table for leaking of welding slag; there equipped a moveable plate beneath table surface to hold welding slag.
- 2 holes are designed on table corners for baffle plate and lights assembly available.
- The middle shelf can place welding machine and other tools.
- Dimension is 760x800x1100mm (L x W x H).



Fiberglass Welding Blanket



Paper Part Code	Size
WB-A	2000 x 900 mm
WB-B	4000 x 900 mm
WB-C	2000 x 1800 mm

Storage Rack



Waste Engine Oil Collector



- OC-A is two-shelf model; OC-B is three-shelf model.
- Each shelf can carry 10 bottles of oil.
- Groove design to flow oil to one end.
- 8-hole rack is optional to hold small size bottles.



Tool Carts

Model:
TC-A



for Spray Gun Placing & Adding Paints

- Drawer is optional.
- It is made of stainless steel.
- Size is 75 x 45 x 75cm (LxWxH).



General Tool Cart

- Plate is made of 2mm galvanized steel painted;
- Column is made of 3mm galvanized steel painted;
- Loading capacity of each shelf is 200 kg;
- Size is 80 x 50 x 80cm (LxWxH); length including handle is 85cm.

Model:
TC-D



for spare parts storage and cleaning

- Size is 100 x 60 x 77cm (LxWxH).

Model:
TC-B



Model:
TC-TK • with tool kits



Model:
TC-GR

Part Code	TC-GR	
Cart Overall Size	76.5x44.5x90.5 cm (LxWxH)	
Cart Gross Weight	55.1 kg	
Load Bearing Capacity	1000 kg	
Material	1.8mm thick Cold-Rolled Steel	
DRAWER (total 7pcs)	6pcs Internal Size	57x38.5x6 cm (WxDpthxH)
	1pc Internal Size	57x38.5x13.5 cm (WxDpthxH)
	Loading Capacity	40 kg

Electric Polisher



Model:
EP-A

Part Code	EP-A
Power Supply	AC, 220-240V, 50-60Hz
Input Power	1200W
Polish Wheel Dia.	180MM
No-Load Speed	600 ~ 3000 RPM
Turnover Speed	3000 RPM
Output Power	1200W
Shift Mode	Fixed Gear

Retractable Air Hose Reel



Retractable Air Hose Reel

Part Code	QG6.5-10	QG6.5-12	QG8.0-10	QG8.0-12	
Hose	Inner Dia. x Outer Dia.	6.5 x 10 mm	6.5 x 10 mm	8 x 12 mm	8 x 12 mm
	Material	PU Mesh			
Outlet Hose Length	10 m	12 m	10 m	12 m	
Inlet Hose Length	1 m				
Working Pressure	13 bar				
Working Temperature	-15°C~+40°C				
Gross Weight	4.0 KG	4.1 KG	4.1 KG	4.2 KG	



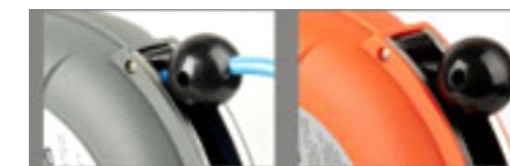
Retractable Electric Cable Hose Reel

Part Code	DG10-10	DG10-12	DG15-10	DG15-12
Wire Size	2 x 1.0 mm ²	2 x 1.0 mm ²	2 x 1.5 mm ²	2 x 1.5 mm ²
Input Voltage	230V			
Cable Length	10 m	12 m	10 m	12 m
Power	1000W		1500W	
Working Temperature	-15°C~+40°C			
Protection Class	Ip42			
Package Size	43x18x39cm			
Gross Weight	4.0 KG	4.1 KG	4.1 KG	4.4 KG



Retractable Water Hose Reel

Part Code	WG- 1280-10	WG- 1280-12
Hose	Inner Dia. x Outer Dia.	8 x 12 mm
	Material	PU Mesh
Outlet Hose Length	10 m	12 m
Inlet Hose Length	1 m	
Working Pressure	8 bar	
Working Temperature	1°C~40°C	
Package Size	43x18x39 cm	
Gross Weight	4.0 KG	4.1 KG



Color for Choosing

Tyre Changers



Model:
L7026

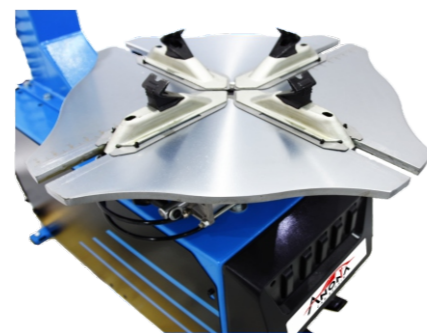
Multifunctional Assisted Device

Motor Power	1.1KW
Voltage	110V/220V/380V
Wheel Clamping (Nominal)	
Internal (min – max)	13 – 26 in.
External (min – max)	11 – 24 in.
Maximum Tyre Diameter	45 in. (1143mm)
Maximum Tyre Width	14 in. (355mm)
Air Pressure	8 Bar
Bead Breaker Power	≥2500kg
Noise Level	74 db



- Pedal switch is full quick installation design.
- The five-way valve is totally made of aluminium.

Options



- 24 inch self-centering turntable.
- Diameter marks help external

Ideal solution for tire shops because it is heavier, more rigid and more powerful than other machines in the same level .

Tyre Changers

Pneumatic Assisted Device



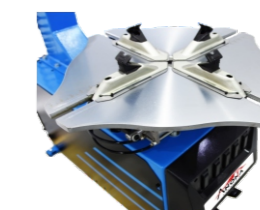
Compact Design

Motor Power	1.1KW
Voltage	110V/220V/380V
Wheel Clamping (Nominal)	
Internal (min – max)	13 – 26 in.
External (min – max)	11 – 24 in.
Maximum Tyre Diameter	45 in. (1041mm)
Maximum Tyre Width	14 in. (355mm)
Air Pressure	8 Bar
Bead Breaker Power	≥2500kg
Noise Level	74 db

Model:
L7022



- The hand-screw locks the diameter at any position.
- Steel head with plastic gasket for wheel protection.



22 inch four-jaw turntable

Model:
L7024



Economic Model for 22 inch tire

Motor Power	1.1KW
Voltage	110V/220V/380V
Wheel Clamping (Nominal)	
Internal (min – max)	12 – 22 in.
External (min – max)	10 – 19 in.
Maximum Tyre Diameter	41 in. (1041mm)
Maximum Tyre Width	14 in. (355mm)
Air Pressure	8 Bar
Bead Breaker Power	≥1400kg

Tyre Changers



Model:
TCM-A

It Is Simple And Basic One.

Max. Wheel Diameter	1040 mm
Max. Wheel Width	330 mm
Air Supply	8 bar
Internal Clamping	13" ~ 24"
External Clamping	11" ~ 22"
Power	1.1 KW
Power Supply	220V, 1PH; 380V, 3PH; 50/60Hz
Working Noise	<70 dB
N.W./G.W.	180 kg / 200 kg
Package Size	100 x 80 x 90 cm

The Basic One With Multi-function Help

Max. Wheel Diameter	1040 mm
Max. Wheel Width	330 mm
Air Supply	8 bar
Internal Clamping	13" ~ 24"
External Clamping	11" ~ 22"
Power	1.1 KW
Power Supply	220V, 1PH; 380V, 3PH; 50/60Hz
Working Noise	<70 dB
N.W./G.W.	230 kg / 250 kg
Package Size	105 x 90 x 165 cm

Model:
TCM-B



Model:
WBM-D



Rim Diameter Range	10" ~ 24"
Rim Width Range	1.5" ~ 20"
Max. Wheel Weight	70 kg
Measure Time	8 seconds
Balance Accuracy	±1 g
Balance Speed	200 rpm
Power	180 ~ 300 W
Electrical Requirement	110/220V, 1PH, 50/60Hz
Working Noise	<70 dB
N.W./G.W.	105 kg / 125 kg
Package Size	113 x 75 x 115 cm

Model:
WBM-C



Rim Diameter Range	10" ~ 24"
Rim Width Range	1.5" ~ 20"
Max. Wheel Weight	65 kg
Measure Time	8 seconds
Balance Speed	200 rpm
Electrical Requirement	110/220V, 1PH, 50/60Hz
Working Noise	<70 dB
Balance Accuracy	±1 g

Wheel Balancer

Digital Tyre Inflator



Wall Mounted



Pedestal



Pedestal with hose reel

- Petrol Bunks
- Bus Depot
- Lorry Depot
- Service Centers
- Automobile Garages
- Tyre Shops



- Pressure Sensor
- Degree of accuracy: 0.05kg/cm²



- Inflating Valve
- No air leaking

Voltage	220 -240V, 50/60 Hz
Air Input Pressure	0-10kg/ cm ²
Working Condition	-20°C ~ +50°C
Power	30W
Air Output Pressure	0.6-8.4kg/ cm ²
Display Mode	LED
Accuracy	0.05kg/ m ²
Air Hose Reel Length	10M



- Power Socket
- Air Source Connector

- Two digital read outs: 1 for SET pressure and another for TYRE pressure.
- They have 4 different preset pressure (2,2.5,3.0,3.5) shortcut keys
- One self-defined key can store the common used pressure value and run it automatically.
- They are suitable for inflating motorcycles, all kinds of car and mini-medium bus.
- If no any operation in 15minutes, the display will be off for saving power.
- Over inflated mode works on new tyre ONLY, avoiding the air leakage made by the concave rim.

3D Wheel Alignment Machine



Model: **WDM-A**



Additional 21" Monitor

- is **optional** to bring more convenience for operators when work under cars.

The **First** advantage is Automatic Compensation **WITHOUT PUSH.**

Both automatic compensation without push and push-type compensation are available according to different operation preferences.

Tablet PC

- is **optional** for long distance alignment operation through Bluetooth available.



Model: **WDM-B**

Automatic Vehicle Height Tracking System

Screw Air Compressor



POWER	7.5 KW	Drive Way	variable frequency soft start
F.A.D	0.4 ~ 1.3 m³/min	Lubricant	4 L
Discharge Pressure	0.7 ~ 1.0 Mpa	Noise	62±2 dB
Cooling Type	Wind Cooling	Outlet Pipe Dia.	ZG 1/2"
Ambient Temperature	-5°C ~ 40°C	Outlet Air Temperature	Ambient Temperature + 10°C ~ 40°C
Weight	180 kg	Dimension	900 x 650 x 785 mm



Air Flow	1.5 m³/min
Refrigerant	R22
Voltage	220V / 50Hz
Refrigeration Compressor	Panasonic, 0.5 KW
Outlet Pipe Dia.	1 inch
Dimension	700 x 400 x 710 mm



Refrigerator Dryer, Air Tank and Line Filters

● are necessary matched product for a whole compressed air

Piston Air Compressor

Lifeblood of body shops



Air Flow	1.5 m³/min
Outlet Dia.	1 inch
Diameter	105 mm
Length	320 mm



N-1.05/12.5 Series

Max. Pressure	0.84 Mpa
Inlet/Outlet Tube Dia.	1.5 inch
Safety Valve Dia.	1.5 inch
Dimension	650mm dia., 2093mm H, 4.25mm thick
Weight	160 KG
Max. Pressure	0.84 MPa

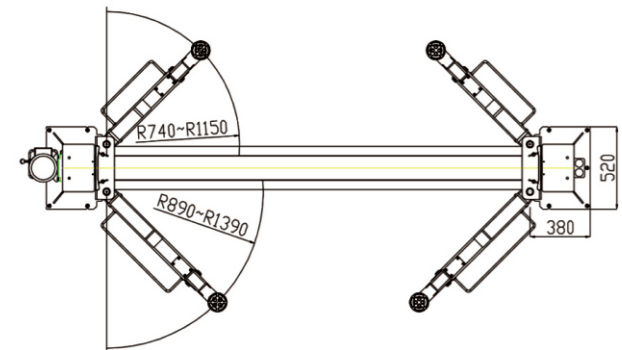


A-0.9/8 Series

Model No.	N-1.05/12.5--300	N-1.05/12.5--500
Power (Kw/Hp)	7.5/10	7.5/10
Cylinder dia. (mm)	105×2/55*2	105×2/55*2
Speed (rpm)	850	850
Air Delivery (L/Min/C.F.M)	1050/1.05	1050/1.05
Vol. /Frequency (V/Hz)	380V/50HZ	380V/50HZ
Max Pressure (psi/bar)	179/12.5	179/12.5
Tank (L)	300	500

Model No.	A-0.9/8-200	A-0.9/8-200	A-0.9/8-200
Power (Kw/Hp)	7.5/10	7.5/10	7.5/10
Cylinder dia. (mm)	90, 3pcs	90, 3pcs	90, 3pcs
Speed (rpm)	850	850	850
Air Delivery (L/Min/C.F.M)	900/0.9	900/0.9	900/0.9
Vol. /Frequency (V/Hz)	380V/50HZ	380V/50HZ	380V/50HZ
Max Pressure (psi/bar)	115/8	115/8	115/8
Tank (L)	200	300	500

Two post Lift



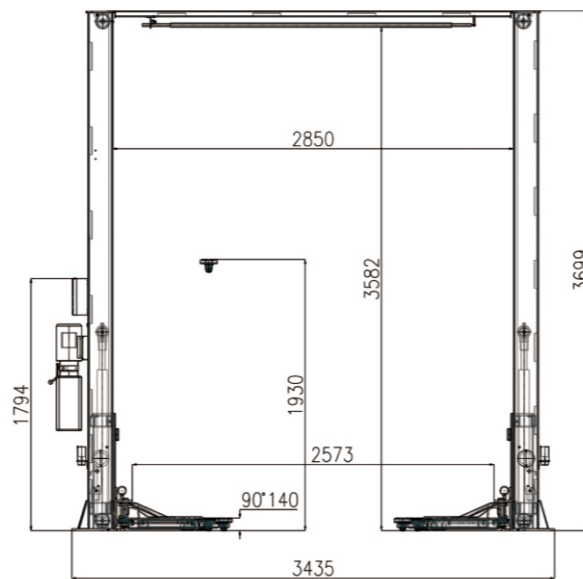
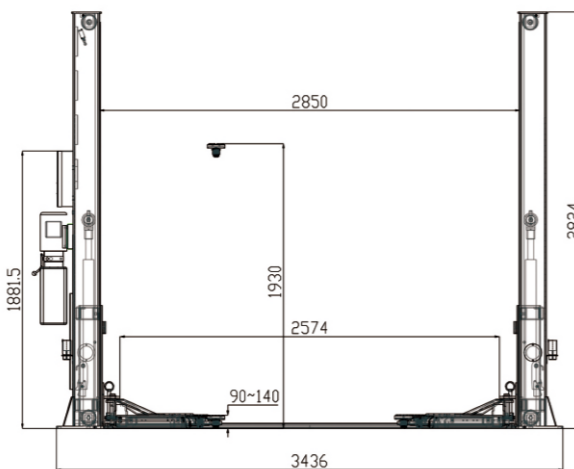
Model:
AN-240C



Model No.	AN-240C	AN-240P
Type	Clear Floor	Floor Plate
Lifting Capacity	4000KG	4200KG
Minimum Pad Height	90mm	
Lifting Height	1930mm	
Lifting Time	≤ 50 seconds	
Overall Height	3700mm	2824mm
Overall Width	3630mm	
Width Between Posts	2850mm	
Pump Power	2.2KW	
Power	220V/230V/240V/380V/400V/415V,1/3PH	
Rated Oil Pressure	18Mpa	

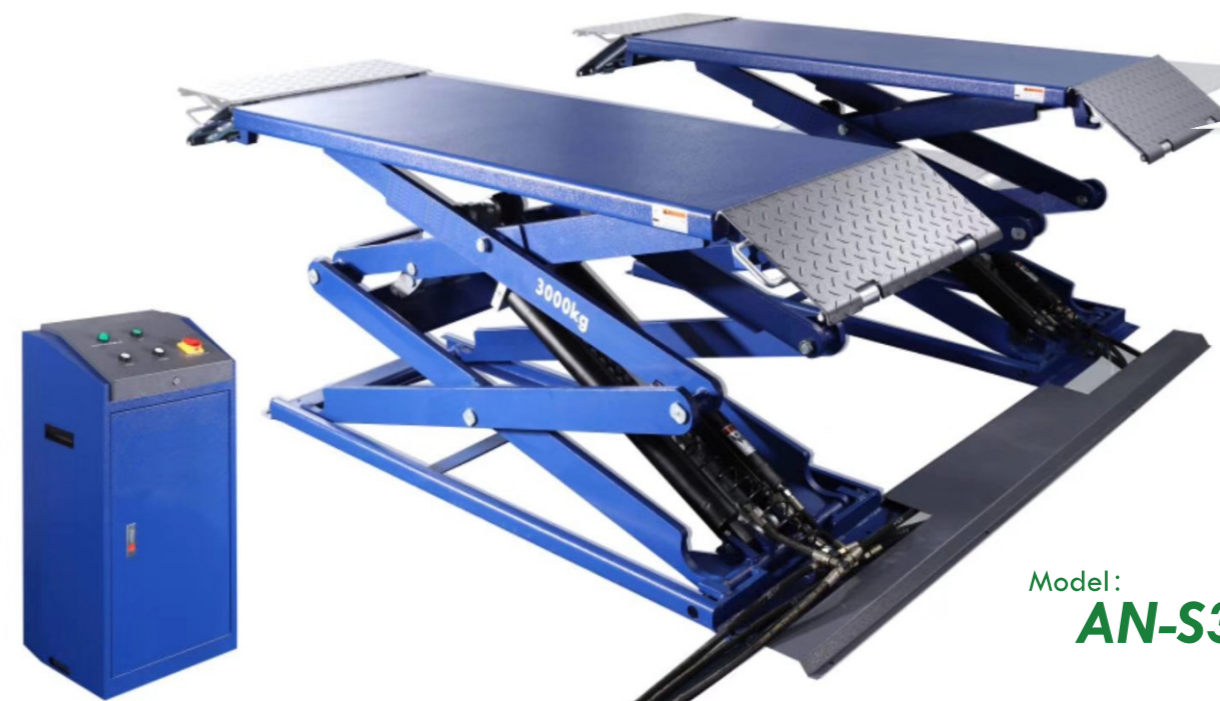


Model:
AN-240P



Scissor Lift

Low Profile



Model:
AN-S30

Model No.	AN-S30
Type	Pneumatic unlocking
Lifting Capacity	3000KG
Max. Lifting Height	1920mm
Minimum Pad Height	105mm
Lifting Time	≤ 55 seconds
Overall Width	2100mm
Overall Length	2050mm
Platform Width	650mm
Platform Length	1500-2050mm
Pump Power	2.2KW
Power	380V/3 Phase 220V/1 Phase



550mm Extended Platform



Double Track Safety Tooth



Model:
A-J3

Min. Height: 130mm
Max. Height: 460mm

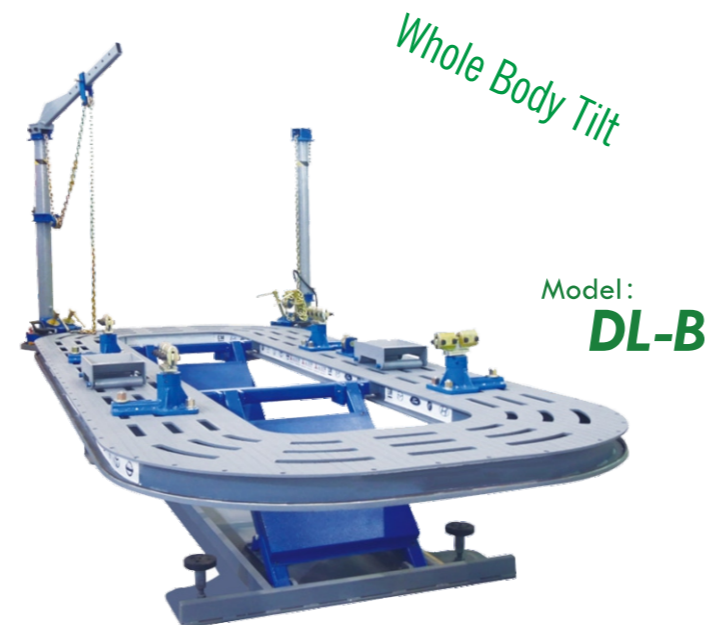
Min. Height: 75mm
Max. Height: 510mm



Model:
A-JB3

Bearing Weight: 3T

Auto Body Collision Repair Machines



Model No.	DL-A	DL-B
Material	Manganese Steel	
Lifting Way	Sidewise Tilting	Whole-Body Tilting
Platform Length	5200 mm	
Platform Width	2100 mm	
Platform Height	600 mm	300 ~ 1000 mm
Tower Pulling Capacity	2 x 10 tons	
Hydraulic Power	70 MPa	
Radius of Tower	360°	
Lifting Capacity	3500 kg	3000 kg
Gross Weight	2500 kg	



- Platform with lateral recesses design enables four standard clamps to be mounted at any spot on the platform.
- Two pulling towers are hydraulically driven; its 10 tons pulling capacity and 360° walking ability are capable of repairing accidental cars easily.
- If one wants to pinpoint the height of pulling strength application point, please just change the collar with pulley.
- Two ramps are equipped to drive cars ON and OFF the platform.
- Complete clamp kit and tools are provided for various collisions' repairing.

Paint Booth Filter



- Ceiling Filter
- Exhaust Air Filter (Fiberglass)
- Intake Air Filter Bag
- Paper Filter

